

Lubricator Cartridge

■ Empty Cartridge (Order Code : G00)

For Self-Filling of grease.

Oil Filling Connector is necessary.

Supports LUG-400 lubricator

■ Standard Grease (Order Code : G01)

NLGI Grade 2

Temperature Range -30°C ~ +140°C.

Containing PTFE, good performance in high pressure and metal adhesion.

Suitable for high loading gear transmission system.

Suitable for high temperature environment.

Kinematic Viscosity 32 cSt / 40°C

Supports LUG lubricator pre-fill at 400 cm³

■ Food Grade Grease (Order Code : G02)

NLGI Grade 2

Temperature Range -35°C ~ +120°C.

NFS HI license.

Provide good wearing resistance and extend lubrication interval.

Food Grade Grease is Non-toxic, Odorless, Colorless and tasteless.

Kinematic Viscosity 50 cSt / 40°C.

Supports LUG lubricator pre-fill at 400 cm³

■ Low Temperature Grease (Order Code : G03)

NLGI Grade 2

Temperature Range -50°C ~ +120°C

Contains special additives for anti-wear, anti-oxidant, anti-corrosion and high pressure resistance.

Suitable for high loading gear transmission system.

Kinematic Viscosity 15 cSt / 40°C.

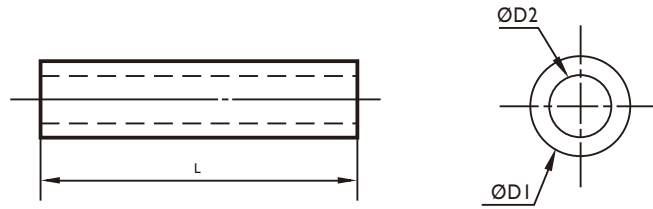
Supports LUG lubricator pre-fill at 400 cm³

Remark:

The APEX Smart Lubrication System has been optimized for the 3 greases as shown above.

Using other greases, the pumping performance of APEX Lubrication System could be different.

PA Tube



Type of Grease	D1	D2	Length in Package (meter)	Order Code
Empty Tube	4	2.5	200	T04
	6	4	200	T06
	8	5	100	T08
Standard Grease (Order Code : G01)	4	2.5	5	T04-01
	6	4	10	T06-01
	8	5	10	T08-01
Food Grade (Order Code : G02)	4	2.5	5	T04-02
	6	4	5	T06-02
	8	5	5	T08-02
Low Temperature (Order Code : G03)	4	2.5	5	T04-03
	6	4	10	T06-03
	8	5	10	T08-03

PA 12 Tube is pre-filled with grease.

Operating Pressure: 25 kg/cm² by 4 mm PA Tube; 28 kg/cm² by 6 mm & 8 mm PA Tube (Temperature 20°C)

Operating Temperature : -40°C ~ +80°C